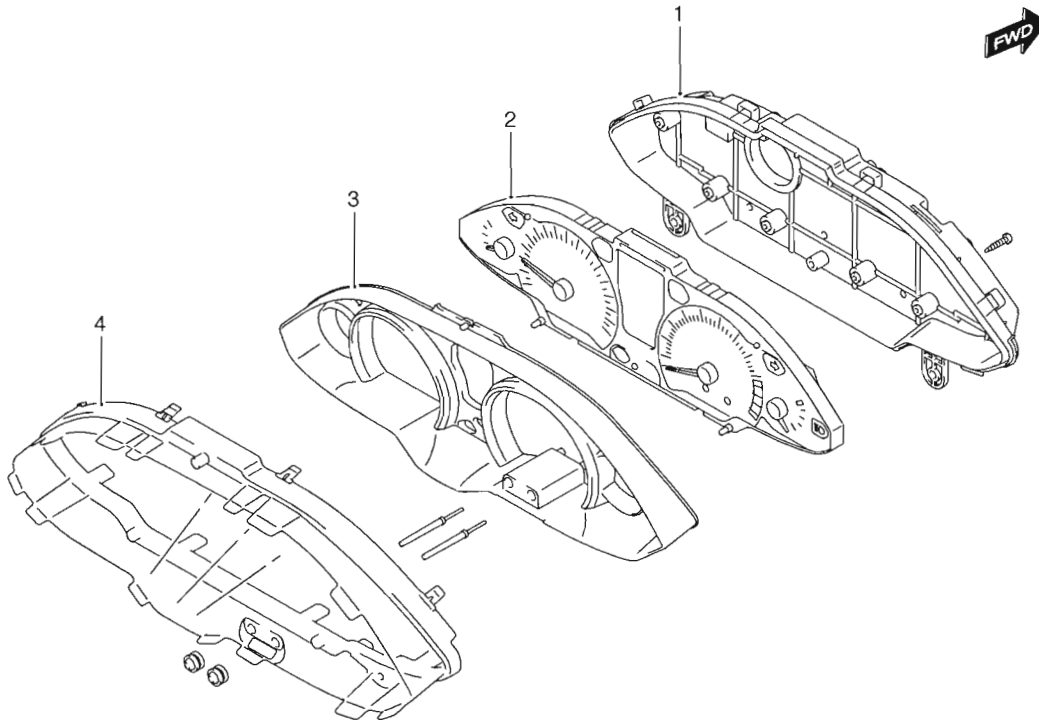


Combination Meter / Fuel Meter / Horn

Repair Instructions

Combination Meter Components

B705H29306001



I705H1930009-01

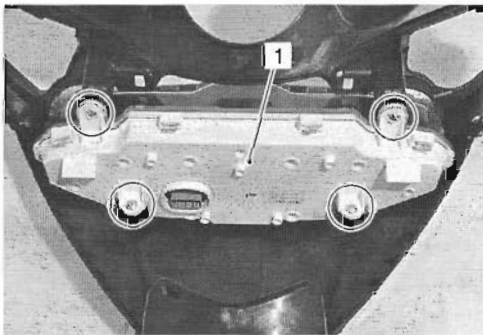
1. Lower case	2. Combination meter	3. Wind plate	4. Upper case
---------------	----------------------	---------------	---------------

Combination Meter Removal and Installation

B705H29306002

Removal

- 1) Remove the meter panel.
Refer to "Meter Panel Removal and Installation in Section 9D (Page9D-14)".
- 2) Remove the combination meter assembly (1).



I705H1930001-01

Installation

Install the combination meter in the reverse order of the removal.

Combination Meter Disassembly and Assembly

B705H29306003

Refer to "Combination Meter Removal and Installation (Page9C-1)".

Disassembly

Disassemble the combination meter. Refer to "Combination Meter Components (Page9C-1)".

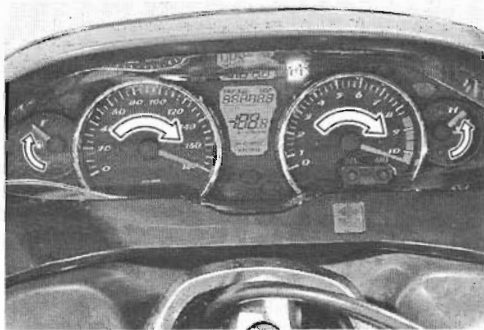
Assembly

Assemble the combination meter. Refer to "Combination Meter Components (Page9C-1)".

Combination Meter Inspection

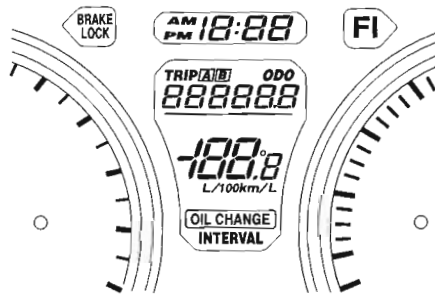
B705H29306004

Check that the illumination LED on the meter panel lights up and the indicating needle each on fuel meter, speedometer, tachometer and coolant temperature sensor once moves to the maximum and then returns to the home position immediately after the ignition switch has been turned on.



I705H1930002-01

At the same time, check that the FI lamp and each of the clock and multi-information meter segments turn on and thereafter go off to resume the normal display.



I705H1930008-01

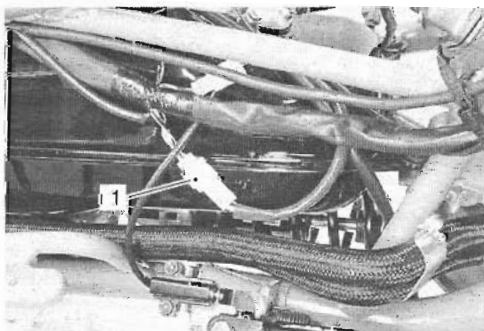
Check that the other LEDs (turn signal indicator, high beam indicator and brake-lock indicator) turn on with the respective switches operated. If the LED does not light up, inspect the wiring harness and connectors. If no abnormal condition is found, replace the combination meter.

Fuel Level Meter Inspection

B705H29306005

Inspect the fuel level meter in the following procedures:

- 1) Remove the foot board and fuel pump coupler (1). Refer to "Footboard Removal and Installation in Section 9D (Page9D-21)".

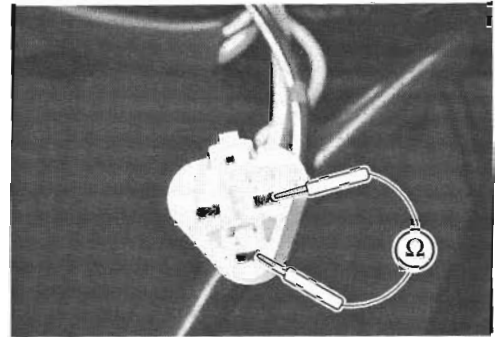


I705H1930003-01

- 2) Check that the fuel level meter operates properly when a resistor is connected between the terminals of fuel pump wiring coupler (Y/B and B/W) on the wiring harness side. If any abnormal condition is noted, replace the combination meter.

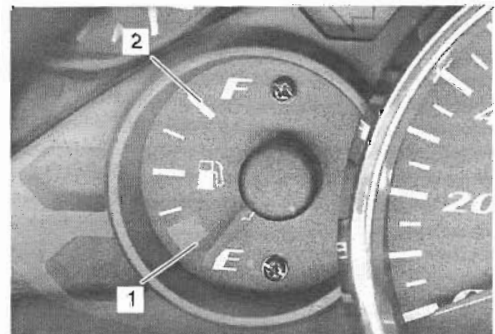
NOTE

- Prior to the inspection, check that the fuel gauge is functioning properly.
- When reading the meter indication, wait at least 20 seconds after the resistor has been connected.



I705H1930004-01

Resister	Meter indication
130 Ω	(1)
10 Ω	(2)



I705H1930005-05

Fuel Level Gauge Inspection

B705H29306006

Refer to "Fuel Level Gauge Inspection in Section 1G (Page1G-12)".

Speedometer Inspection

B705H29306007

If the speedometer, odometer or trip meter does not function properly, inspect the speedometer sensor and connection of coupler. If the speedometer sensor and connection are all right, replace the meter with a new one.

Refer to "Combination Meter Disassembly and Assembly (Page9C-1)".

Speed Sensor Removal and Installation

B705H29306008

Refer to "Speed Sensor Removal and Installation in Section 1C (Page1C-4)".

Speed Sensor Inspection

B705H29306009

Refer to "Speed Sensor Inspection in Section 1C (Page1C-3)".

Ignition Switch Inspection

B705H29306010

Refer to "Ignition Switch Inspection in Section 9B (Page9B-11)".

Ignition Switch Removal and Installation

B705H29306011

Refer to "Ignition Switch Removal and Installation in Section 1H (Page1H-8)".

Horn Inspection

B705H29306012

Horn Button Inspection

NOTE

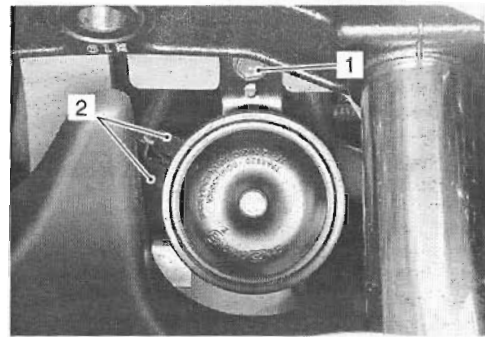
If the horn sound condition is normal, it is not necessary to inspect the horn button continuity.

Refer to "Horn Button Inspection in Section 9B (Page9B-9)".

Horn Inspection

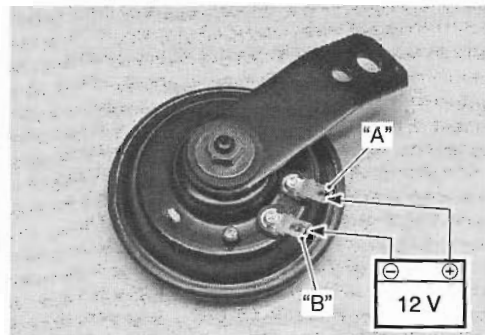
Inspect the horn in the following procedures:

- 1) Remove the horn mounting bolt (1) and disconnect the horn couplers (2).



I705H1930006-01

- 2) Connect a 12 V battery to terminal "A" and terminal "B". If the sound heard from the horn, replace the horn with a new one.



I705H1930007-01

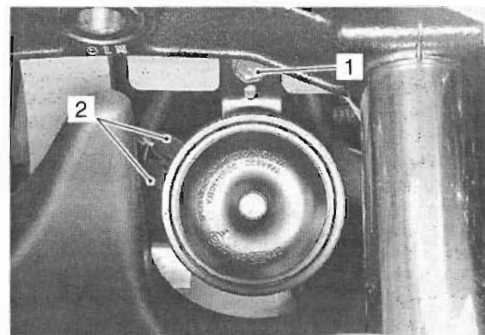
- 3) After finishing the horn inspection, reinstall the horn coupler and horn mounting bolt.

Horn Removal and Installation

B705H29306013

Removal

- 1) Remove the horn mounting bolt (1).
- 2) Disconnect the horn couplers (2).



I705H1930006-01

Installation

Install the horn in the reverse order of removal.

Specifications

Service Data

B705H29307001

Wattage

Unit: W

Item	Standard / specification	
	E-02, 19, 24, 54	E-03, 28, 33
Speedometer/tachometer light	LED	←
Engine coolant temp. gauge light	LED	←
Fuel level gauge light	LED	←
Immobilizer indicator light	LED	←
Oil change indicator	LCD	←
FI indicator light	LED	←
Brake-lock indicator light	LED	←
High beam indicator light	LED	←
Turn signal indicator light	LED x 2	←